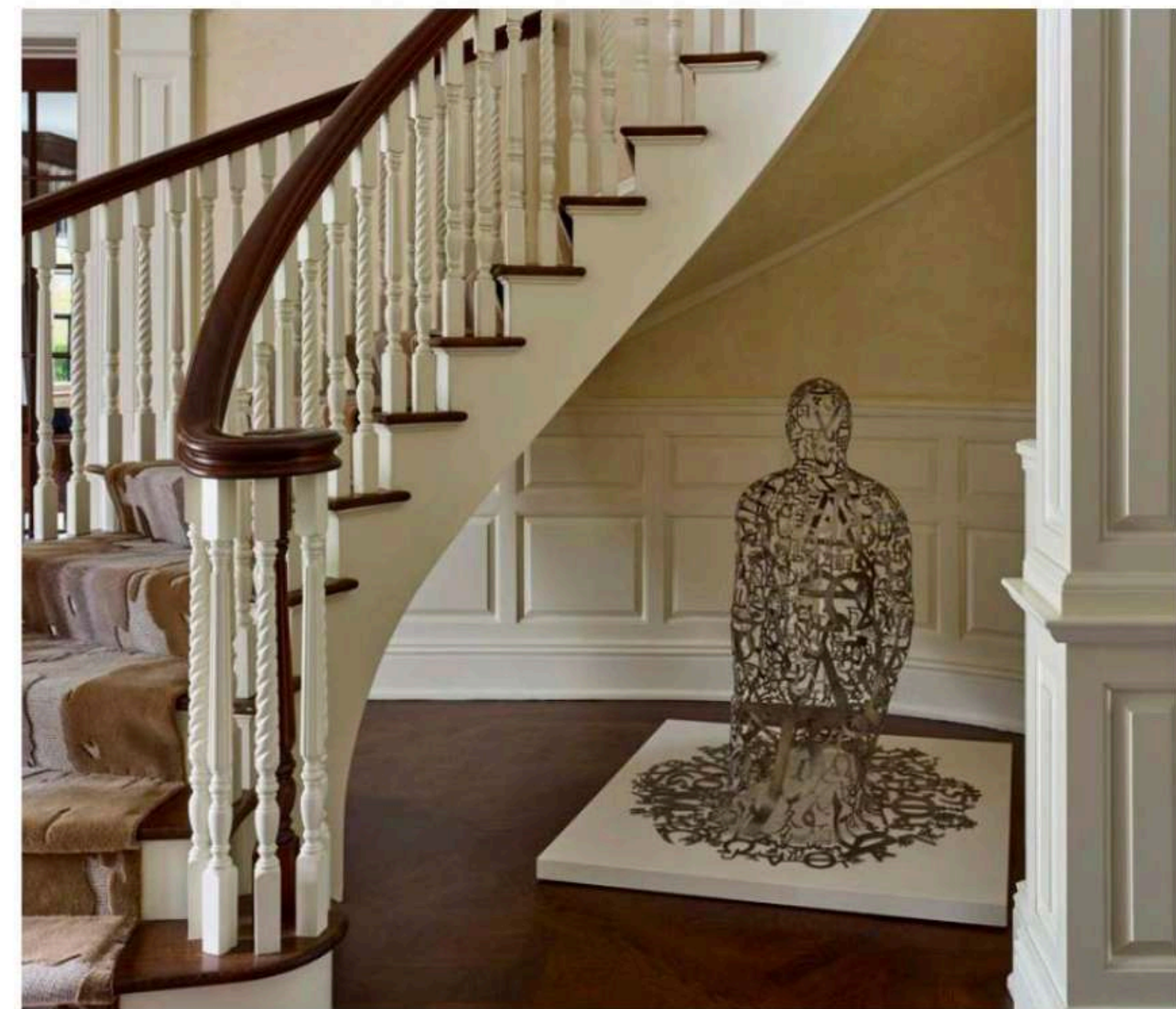


A TRADITIONAL GEORGIAN HOME WITH A MODERNIST APPEAL

Douglas Graneto Design transforms a traditional Georgian home into a secluded contemporary haven.

Story by Meryl Siegman | Photography by Peter Murdock



When a family with three teenage daughters purchased this stately Georgian mansion just down the road from where they lived in Westchester County, NY, they hired Douglas Graneto Design to decorate every room in the house as well as the pool house and outdoor living area. Having lived in a close-knit neighborhood with homes on smaller lots, the family relished the idea of moving into a home with more indoor and outdoor space and the luxury of total privacy. Douglas Graneto, the principal of Douglas Graneto Design, welcomed the opportunity to create an inviting, functional and gracious home for his clients, starting with a clean slate and open minds.

“I was exceptionally excited about this project,” recalls Douglas. “The house has so many great things going for it—a beautiful entrance with a double-height ceiling and a library, a fantastic outdoor screened-in porch, and a beautiful open kitchen with a breakfast area—not to mention a spectacular family room.”

With a degree in art history, a background in custom furniture production, and a deep knowledge of both vintage restoration and modern furniture, Douglas was the perfect choice for this compelling project. Thanks to his love for classically influenced modernism, he is dedicated to individuality and the juxtaposition of old and new. Moreover, Douglas designs bespoke custom furniture and accessories, giving him the unique ability to tailor his interiors to exactly match his clients’ tastes and fit into their individualized spaces.

Sited at the end of a private lane and backed up against a golf course, this 12,000-square-foot residence, built in 2009, features seven bedrooms, seven full bathrooms and two half bathrooms. As a visitor drives down a fairy-tale driveway to approach the majestic house, it appears as a magnificent solitary structure looming on a vast horizon, true to its Georgian heritage. Characterized by its sense of proportion and balance, the home is spacious and grand, surrounded by endless views of the northeastern countryside. It sits on a charming freshwater pond surrounded by a bucolic path.



The Donghia u-shaped sectional in the living room offers a contemporary but classic look.



The cashmere fabric on the chairs and curtains are by Loro Piana. The curtain fabric is trimmed in suede.





A Hudson Furniture table, sconces and chandelier paired with Holly Hunt dining chairs and sideboard create a sense of elegance, opulence and comfort.



The owners were ready for a change with the décor of their new home. "They wanted something serene with a modern feel, evolving from traditional with a collection of American antiques to something more contemporary," Douglas explains. "Everything ended up with a true shift from where they started." He chose a muted palette with colors to help create the warmth and texture he believed the house called for. To warm the tone of the home's expansive spaces, he chose darker, earthy woods. Entering the house, a visitor is immediately taken in by the foyer, with its grand, sweep-



ing circular stairway and soaring ceiling. According to Douglas, "Double-high ceilings add to the sense of spaciousness and grandeur of the public rooms." A dark wood balustrade with painted white spindles accentuates the stairway and upstairs balcony. Light-colored etched wainscoting without hardware, specifically chosen by the clients, and a dark wood floor make a stunning first impression. A custom-sized Kyle Bunting hair-on-hide rug and a Lindsey Adelman chandelier add distinctive touches. An evocative sculpture by the contemporary Spanish artist Jaume Plensa keeps watch from under the staircase.

French doors framed in dark wood serve as the perfect en-

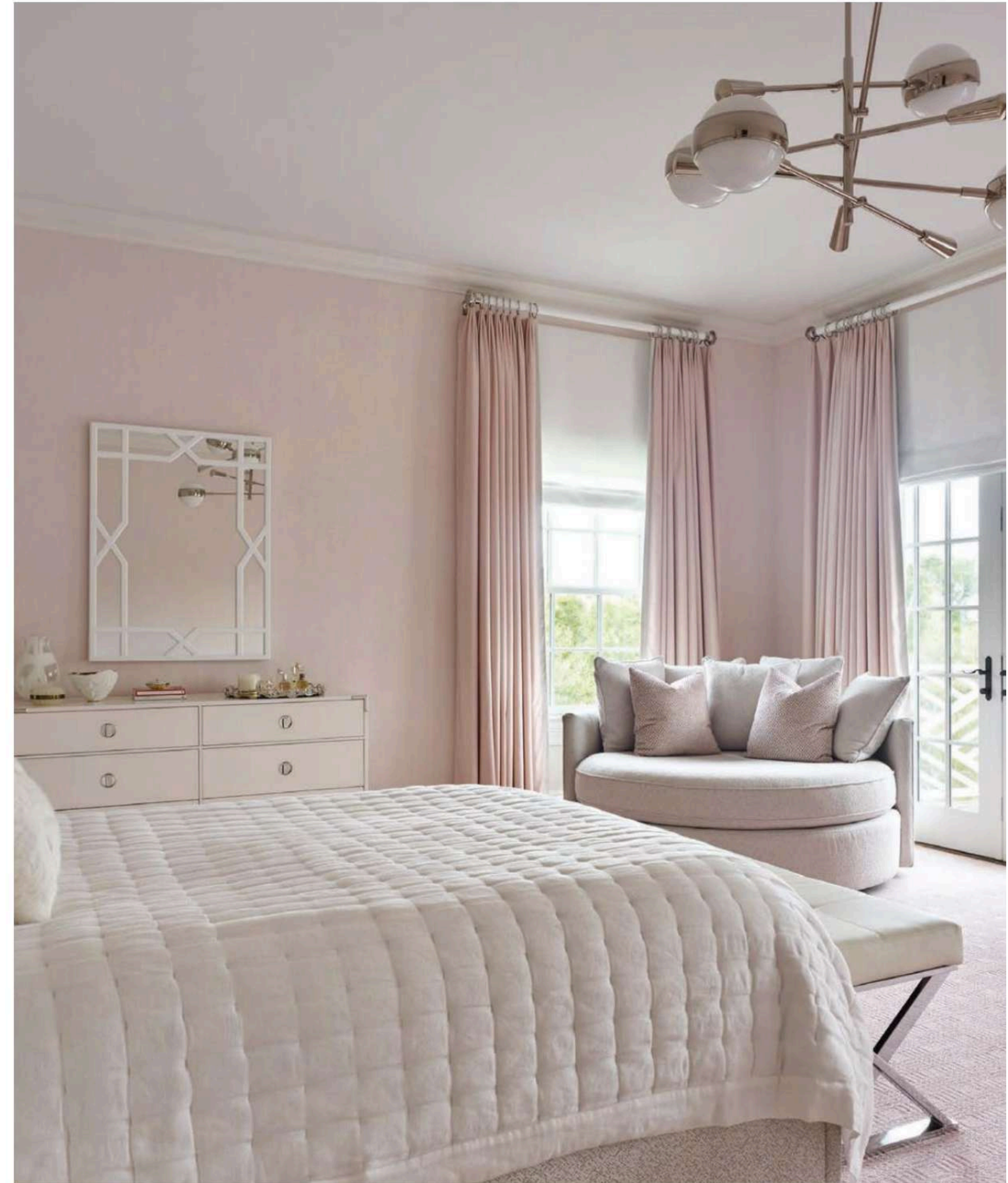
trance to the library. With a vintage desk from Donzella Antiques, a vintage chandelier from John Salibello and Holly Hunt chairs, this cozy retreat provides perfect office space for the owners to work from home in comfort and style. Douglas cleverly extended the existing mahogany paneling to create custom display cases to showcase the owners' unusual collection of vintage guitars.

The living room is a symphony of neutral grays and taupes. Its centerpiece is a sectional sofa by Donghia, offset by Lorin Marsh ottomans and a David Weeks chandelier. Douglas himself designed the custom marble coffee table to pick up on the color palette and transitional style of the room.

The dining room offers picturesque views of the pool and pool house, framed by the lush countryside. The family room is the perfect venue for the family to come together and relax, featuring a sofa created specially for the setting by Douglas, and curtains fashioned from Holland and Sherry fabrics. Overall, the space exudes a calming, classic and updated transitional look, with only a splash of vibrant color provided by the artwork gracing the soft-colored walls. The open kitchen is the perfect setting for family meals, with a charming breakfast nook framed by floor-to-ceiling windows offering views of a peaceful outdoor setting.

Upstairs, the master bedroom retains the soft palette of the rest of the house with a Vladimir Kagan sofa and a custom bed designed by Douglas to accommodate the expansive space. As for the children's bedrooms, "The owners were on the same page with the soft, neutral color palette," says Douglas, "but they allowed their trio of teenaged girls to choose the hues they wanted for their own rooms—which ended up being pink, purple and blue."

Douglas decided to retain the home's original wide-plank oak flooring, layering it with texture and color by laying down area rugs throughout the house to create a sense of warmth and comfort. His choices ranged from a tonal Edward Fields runner on the foyer stairs to a muted striped rug from Beauvais Carpets in the family room. Throughout the home, the walls are plastered in varying finishes, colors and sheens, depending on the mood Douglas wanted to create: a matte finish in the kitchen and family room for a relaxed feel, Venetian plaster with a subtle pearlescent finish in the living room for elegance, and French plaster in a natural limestone finish in the entryway for a traditional feel. The walls are punctuated with eclectic artwork





In the master bedroom, the bed is designed by Douglas Graneto, the sofa by Vladimir Kagan and the vintage chairs by Milo Baughman.



curated with the help of the Neuberger Museum of Art in Purchase, NY, featuring modern, contemporary and African art.

And what mansion would be complete without a full gym in the basement, where the owners can work out in complete privacy?

Resources:

*Douglas Graneto Design
Douglas Graneto
61 Ridgeview Avenue
Greenwich, Connecticut 06830
203.622.8383
douglasgraneto.com*