



The foyer contains an eclectic mix of a Turkish antique carpet, ottomans crafted from Moroccan rugs, a 1970s vintage brass-and-chrome console and modern artwork.



BRISTOLTOWER

An Unconventional Multicultural Mix in a Miami High-rise

Kakar House of Design starts with a blank slate and transforms a stark, modern condo into an eclectic retro modern haven.

Story by Meryl Siegman | Photography by Kris Tamburello

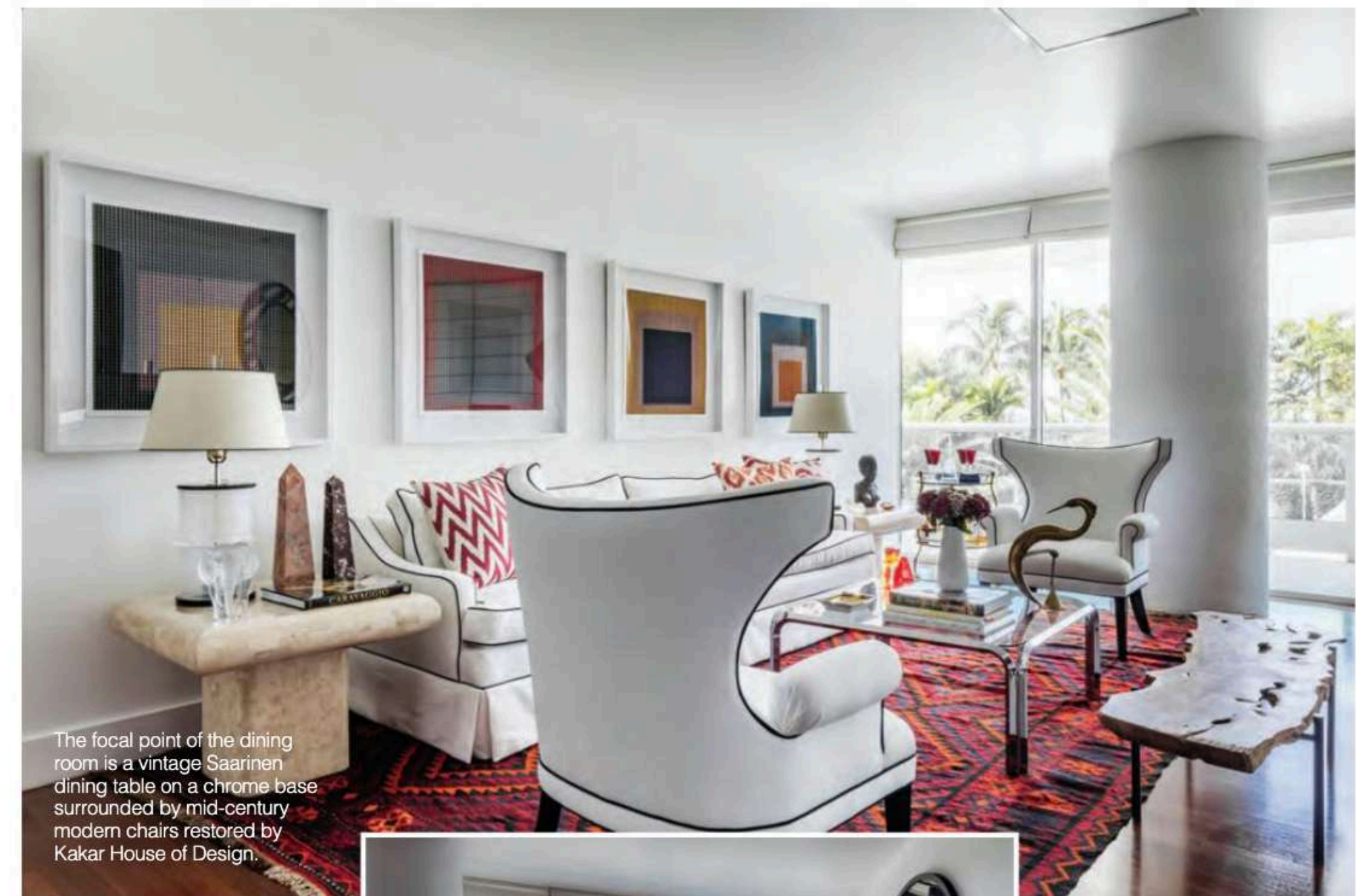
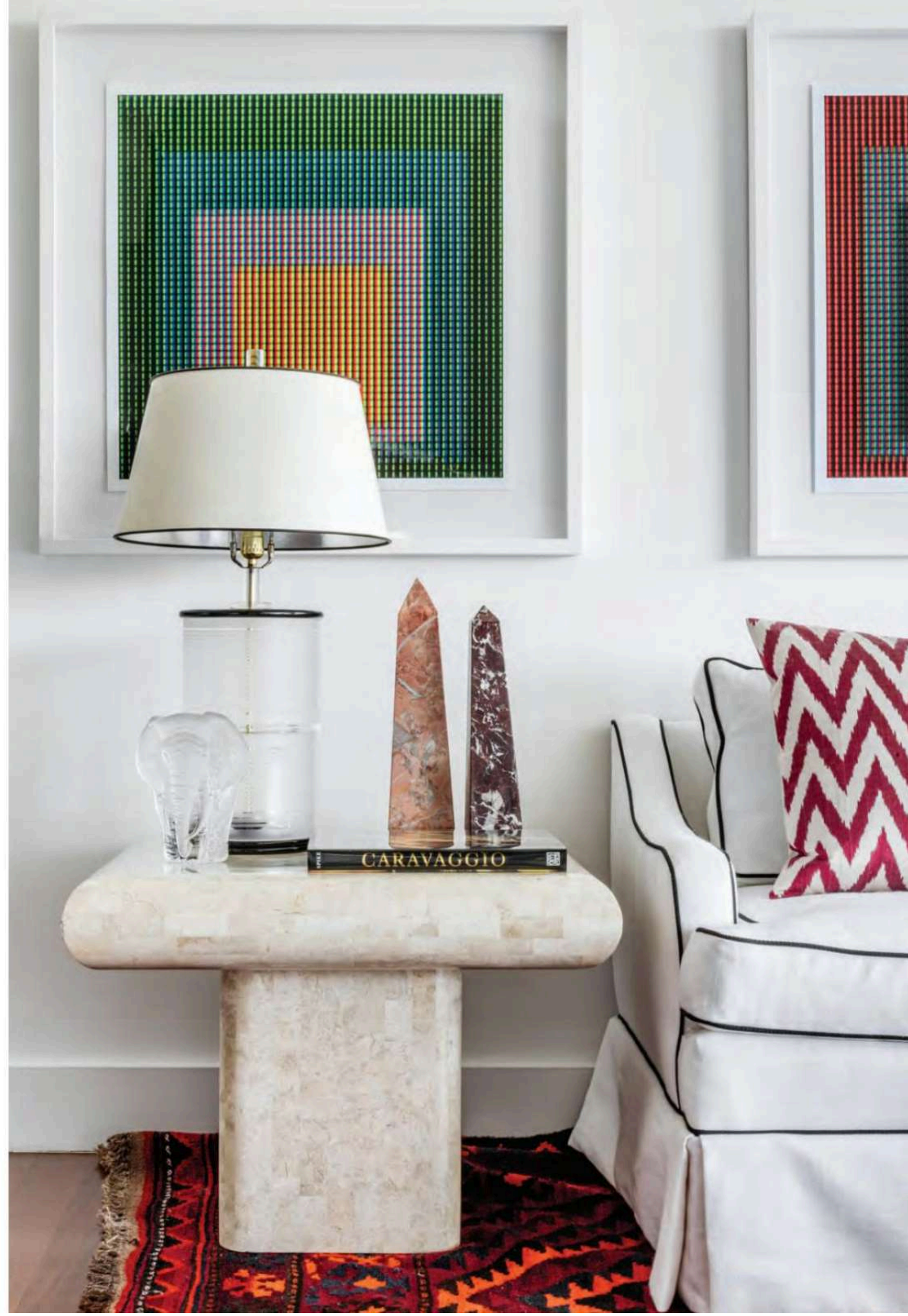


The living room features a refurbished 1940s sofa and customized modern wing chairs in matching white Belgian linen with black piping. A limited series of computer-produced images by the Dutch artist Jeroen Nelemans lines the wall.

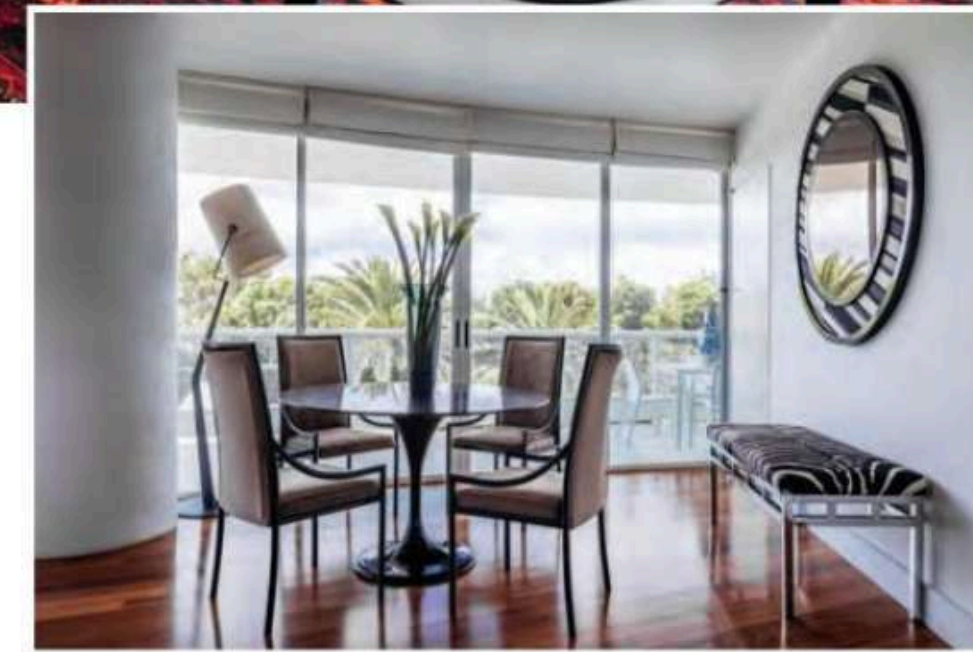
To cross the threshold of this spectacular apartment is to leave behind any preconceptions about modernism and enter into a wonderfully eclectic and imaginative world of multicultural influences. This two-bedroom unit is located in Miami's iconic Bristol Tower, a 40-story, luxury resort-style condominium designed by Luis Reuvelta, on the southern section of Brickell Avenue overlooking Biscayne Bay. The apartment's lower-floor location allows for delightful treetop views of the palm trees lining the street below, in full display from the unit's floor-to-ceiling windows and full-length balcony, creating the sensation that the west-facing, sun-filled residence is sitting in the middle of a tropical rainforest.

When he purchased the apartment, the owner, a multilingual world traveler and art lover, hired Anil Kakar of B11 Studio for the interior design. The client wanted something worldly and unique, rich-looking and layered with patterns and textures. "He was looking for something different, not cookie cutter," Anil explains. Because his client loved red, it became the dominant color in the design scheme. Anil was given carte blanche to take whatever direction he chose, using the empty dwelling as his canvas. "We left the kitchen as is because it had recently been redone," Anil continues. "All the walls in the apartment were whitewashed, which was perfect for letting his extensive art collection, which I helped curate, really pop." The dark wood floors, finished with high-sheen polyurethane, were also left intact.

Anil is an Indian-born entre-



The focal point of the dining room is a vintage Saarinen dining table on a chrome base surrounded by mid-century modern chairs restored by Kakar House of Design.



preneur who grew up in Michigan and later moved to Florida, where he received his MBA at the University of Miami and became a wealth advisor for large banks. Ultimately, he followed his true calling as a designer. In addition to running his own interior design firm, BII Studio, which specializes in high-end residential interiors, he is also the proprietor of Kakar House of Design in Miami's Antiques and Design Plaza, a showroom that sells luxuriously restored vintage and antique furniture. It is also filled with rugs, pillows, lighting, art, sculpture and accessories from around the world. Anil personally sources each item in the store, regularly traveling globally on shopping trips as well as attending auctions and estate sales. He is also an esteemed furniture designer, with his own workshop that fabricates his one-of-a-kind contemporary creations for his clients. "I love repurposing vintage and antique pieces," he says. "The quality is so excellent; it holds up throughout the years. Repurposing them into new, useful objects gives them a new lease on life and creates an aesthetic that otherwise can't be reproduced." His creativity is on display in the Bristol Tower apartment, where most of the pieces were purchased directly from Anil's showroom or fabricated in his workshop specifically for the project.

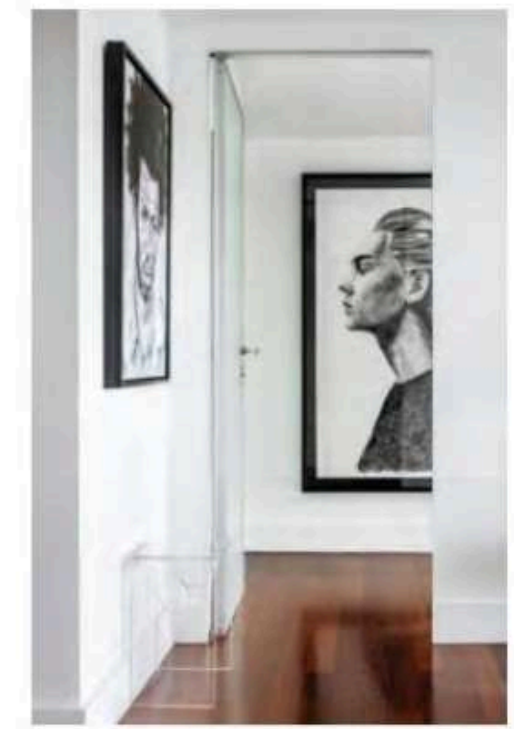
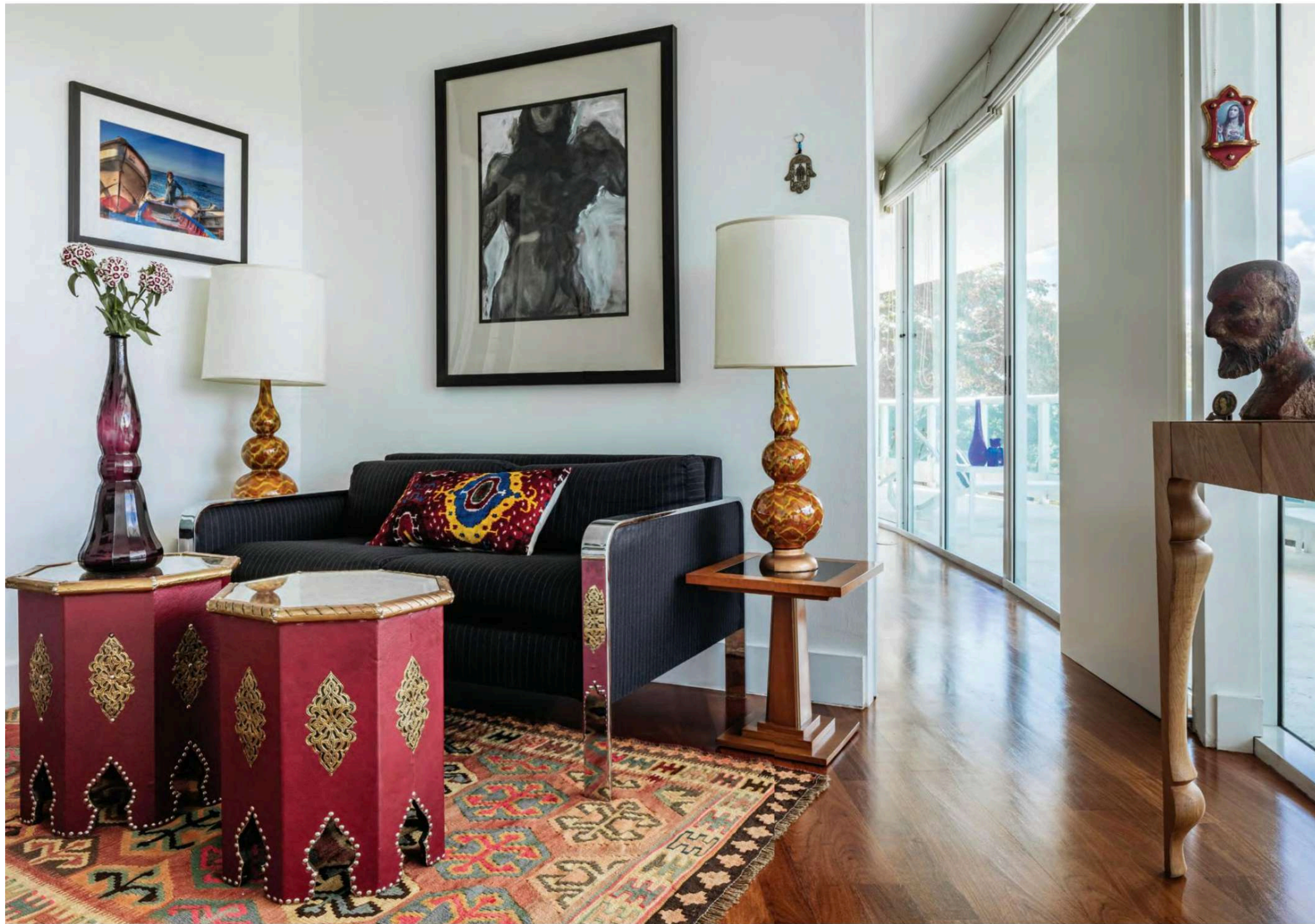
The elegant apartment features a wall of floor-to-ceiling windows running the length of the space and opening onto a gracious balcony. The

layout is simple, with the living, dining and master bedroom off to the left of the entryway, and the second bedroom, used as a den, off to the right. Because the 1970s building features a round construction, the windows have a slight curve, lending a modernist feel to the apartment. With its stark white walls, dark wood floors and abundance of glass, the space provides the perfect

canvas for its eclectic, colorful and explosive interior. Anil masterfully combined the standard materials of mid-century modern—chrome, glass, bronze, Lucite—with soft and tactile elements such as wool, silk, cotton and fur. Retro and modern furniture and accessories are cleverly paired with antiques and vintage pieces. The apartment abounds with color, texture and warmth, accompanied by a splash of playfulness.

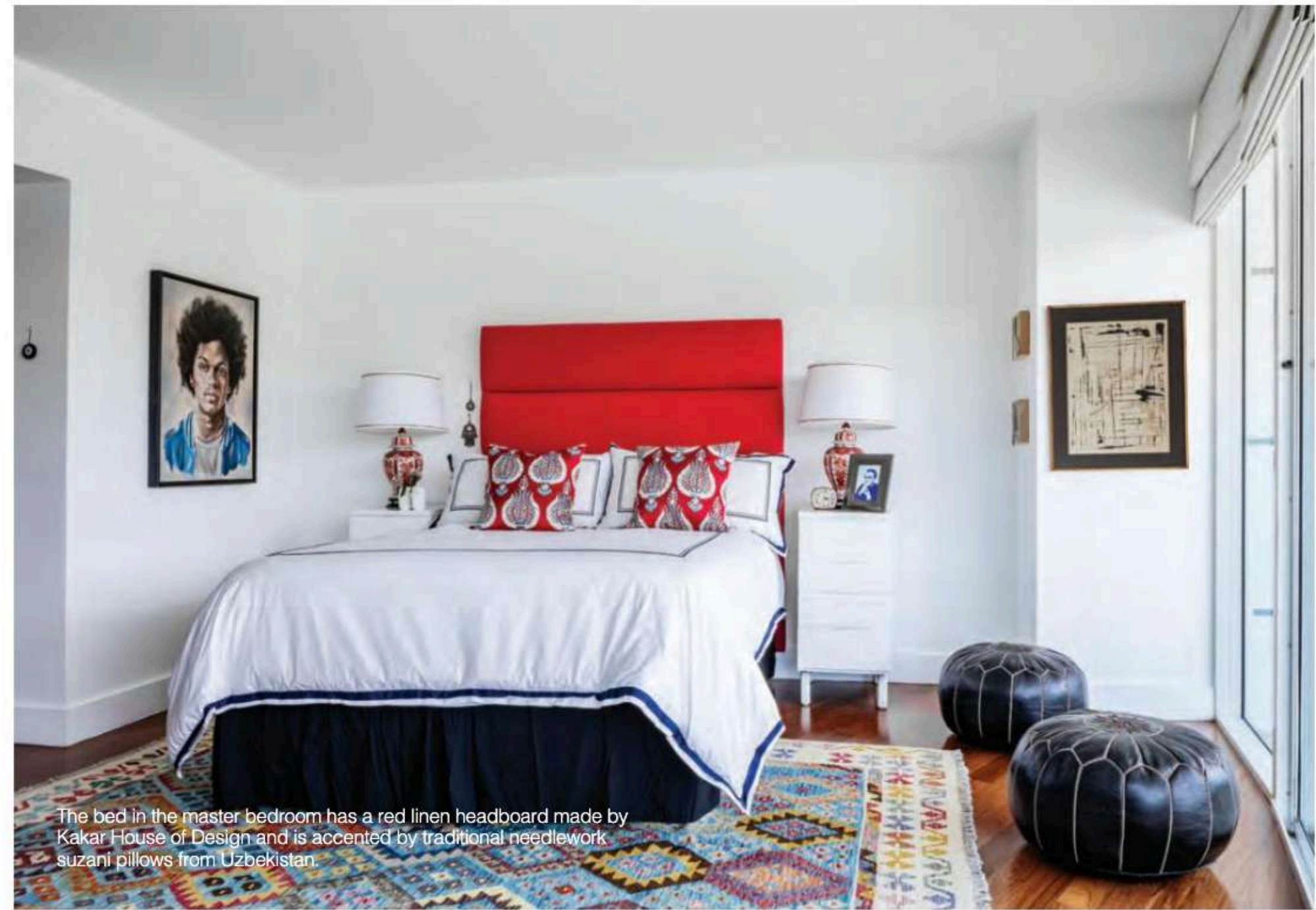
A visitor need not go beyond the entrance foyer to be thoroughly taken in by the brilliant and magical multicultural mix of vintage and modern, traditional and contemporary, staid and eye-popping. First to draw attention is a modern console made from a 1970s vintage brass and chrome base with a glass top. On top, various objects from around the world are on display—an eclectic collection including a Buddha head, an Asian box, a modern sculpture of a face and torso, and various religious items. One is then drawn to an unusual custom-made chair featuring a long-hair





Mongolian lamb seat with an oversized curved wooden back. A fanciful group of masks, including an antique cloth fencing mask, adorns one of the walls. The thick-piled rug is handmade Turkish antique, and the pair of ottomans was crafted from vintage Moroccan rugs in Anil's workshop.

The living room is a masterful mélange of art, furniture and accessories that traverses a wide range of cultures and styles. Red and white predominate, carefully chosen so as not to detract from the artwork tastefully hung on the stark white wall behind the sofa. The four shadowboxes contain a limited-edition series by the modern Dutch artist Jeroen Nelemans, made from computer-produced pixelated images based on the work of Joseph Albert. The sofa is from the 1940s, newly reupholstered in white Belgian linen and accessorized with assorted red silk ikat pillows. Framing the sofa are a pair of modern wing chairs in matching white linen with black contrasting piping. An iron-legged bench made from reclaimed wood imported from the Dominican Republic provides a soft, natural touch. A graceful vintage brass bird sculpture sits atop a quintessential 1960s coffee table constructed from chrome and brass. The mid-century modern side tables are made from tessellated stone, a material that was commonly used in that era. A colorful Turkish kilim pulls the room together perfectly.



The bed in the master bedroom has a red linen headboard made by Kakar House of Design and is accented by traditional needlework suzani pillows from Uzbekistan.

The dining room has an elegant, uncluttered simplicity. At its center is a vintage Saarinen dining table featuring a round glass top set on a base of lacquered black marble, and surrounded by four striking mid-century modern chairs that were completely restored and redone in Anil's studio. The stunning rectangular chrome bench against the wall was originally a coffee table, above which is mounted a mirror from the 1960s.

The work of internationally renowned artists is on display as one enters the master bedroom. A portrait by the Irish artist Joe Mulligan is hung just outside the door, complemented by a staid 1950s Lucite bench below. Another Joe Mulligan and a black-and-white portrait by the Italian painter Dario Moschetta are displayed inside. The bedroom is awash in red, black and white, with a handmade, naturally-dyed rug from India offering more neutral colors in a diamond pattern. The linen headboard, custom-made in Anil's workshop, provides a bright splash of lipstick red. The bed is accessorized by matching handmade suzani embroidered pillows that were made in Uzbekistan and finished by hand in Turkey.

The two bedside nightstands are French from the 1950s, newly lacquered in white. Two handmade Moroccan poufs finished in black leather with white stitching are placed by the windows. Off to the side are a vintage chaise lounge and white lacquer chest on a metal base. The mid-century modern lamp sitting on top features a wonderfully restored gold-foiled shade that reflects the western light.

The second bedroom was transformed into a study/den for the owner to both work and relax. The 1950s sofa is upholstered in repurposed

fabric from a men's pinstripe suit, a charming and whimsical touch. The two lamps pair a mid-century modern ceramic base with a customized modern shade. A vintage wooden desk is positioned to face the Floridian landscape. "The legs on this desk are ballerina," explains Anil. "They are meant to look like ballerinas en pointe." The base of the vintage Asian lamp was originally a vase, now given new life as a lighting fixture, with a custom black foil shade. The desk chair with nailhead trim is Italian, made with black denim jean fabric, picking up on the clever theme of the den's sofa fabric.

"What I loved about this project was the freedom I had to create something totally different and authentic for this client, using one-of-a-kind items," says Anil. "And what he loved was that his apartment was transformed from an empty space into a vibrant home with a unique but lived-in look. The best moment was when he walked in the door for the big reveal."

Resources:

Interior Design
Kakar House of Design
Studio B11
Anil Kakar
8650 Biscayne Boulevard No.23
Miami, FL 33138
305.756.6363
kakarhouseofdesign.com



PIONEER LINENS Story by Meryl Siegman

Pioneer Linens, the revered purveyor of fine linens, custom bedding and couture bath accessories, is a household name in West Palm Beach, a modern legend that continues a family legacy spanning over 100 years and four generations.

It all started at the turn of the 20th century, when Henry Flagler, a descendant of the Rockefellers, established Clematis Street as the center of commerce to entice his wealthy friends from the north to build homes on the island and spend their winters in Florida. It was there that Max Greenberg set up shop in 1912, opening his first store, Pioneer Hardware, in Lake Worth, later expanding it to include furniture. After the store was wiped out by Hurricane Okeechobee in 1928, he moved the business to the Palm Beach area, where he focused on such basic family needs as towels, blankets and rugs. Max was succeeded by his enterprising and inventive son George, under whose stewardship the company started to become the global brand it is today. Dubbed the "Mayor of Clematis Street" due to his community involvement, George ran the business until he died in 2007 at the age of 92.

The "Legacy of Linen"

Today, Pioneer Linens is a destination unto itself, offering West Palm Beach's largest selection of the world's most luxurious brands of bed-

ding, towels and linens, along with a meticulously curated line of gifts and accessories. It has been guided into the 21st century by George's daughter, Penny, who created its Internet program, and her two daughters: Marissa, who runs the online business, and Camille, the director of purchasing.

Alan Murphy, Jr., Max's great-grandson, was involved with company expansion for 12 years, developing its white-glove Yacht Linen division. "This definitely serves a very high-end niche market," explains his sister, Marissa Murphy. "Unlike residential mattresses, the ones on yachts are often custom-made, so the bedsheets have to be a perfect fit." The company sells sheets to exact specifications, conforming to each mattress, which can bow inward or outward. It also customizes hues to match the yacht's color scheme and creates custom logos. According to Marissa, "The turnaround has to be very quick because often the yacht is in harbor for a short period of time." Catering to owners, captains and crew worldwide, Pioneer has a dedicated specialist for this market. Other yachting essentials include linens, bedside and luggage mats, deck towels, bathrobes and laundry bags.

In addition to its 13,000-square-foot flagship store on West Palm Beach's bustling Clematis Street, Pioneer Linens serves clients in 26



different countries via Pioneerlinens.com, a major online luxury specialist. Its walk-in customers include well-heeled ender users, interior designers with an elite clientele, and the managers of estates and yachts. "Our product and service are very white-glove," says Marissa. "Our staff is trained to work with everyone, paying close attention to their particular needs."

What's New and What's Next

"We launched a home consultation service last year," says Marissa. "We pay house calls or, if clients aren't local, we work with them based on e-mailed images of the space they are decorating." The service includes custom motif-matching on sheets and tablecloths, using a par-

ticular design or an existing one from wallpaper or fabric. "The future of the company is private label," Marissa continues. "Later this year, we are introducing our own line of luxury table linens, bath towels and bedsheets manufactured in Italy. There are lots of great new designs coming in." In addition, everything can be customized for size, design and color. Notes Marissa, "The sky's the limit."

*Pioneer Linens
210 N Clematis Street
West Palm Beach, FL 33401
561.655.8553
pioneerlinens.com*